



# GAT MONTHLY MEMBERSHIP PROGRESS REPORT

Results as of: 2/28/2023

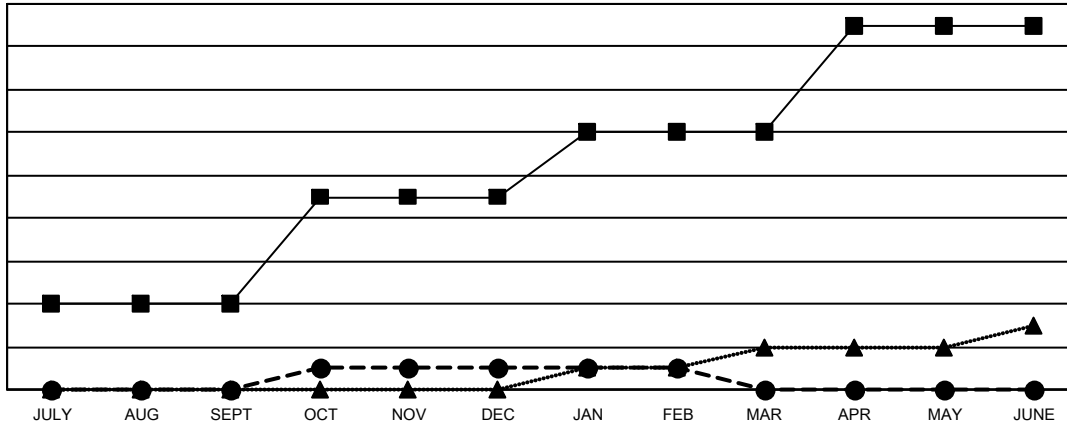
Multiple District 13

LOCATION: OHIO

Clubs			
RESULTS FOR 2022-2023			
QUARTER	NEW CLUB GOAL	NEW CLUBS	DROPPED CLUBS
JULY/AUG/SEPT	4	0	2
OCT/NOV/DEC	5	1	0
JAN/FEB/MAR	3	0	1
APR/MAY/JUNE	5	0	0

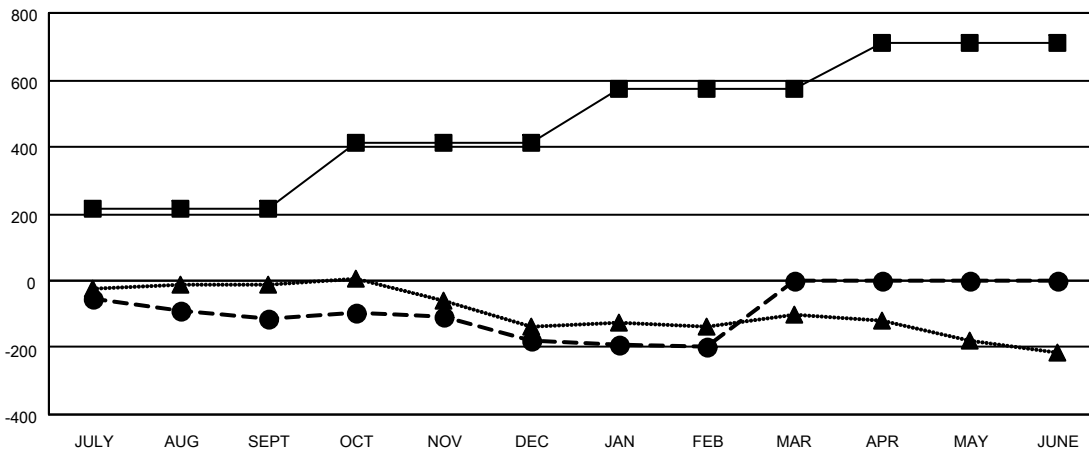
Members			
RESULTS FOR 2022-2023			
QUARTER	MEMBER GROWTH NET GOAL	MEMBER GROWTH ACTUAL	DROPPED MEMBERS ACTUAL (including transfers)
JULY/AUG/SEPT	215	141	240
OCT/NOV/DEC	196	242	293
JAN/FEB/MAR	160	159	151
APR/MAY/JUNE	142	0	0

GOALS AND ACTUAL NEW CLUBS CUMULATIVE



- CURRENT YEAR GOALS FOR NEW CLUBS
- CURRENT YEAR ACTUAL NEW CLUBS
- ▲- LAST YEAR ACTUAL NEW CLUBS

GOALS AND ACTUAL MEMBERS CUMULATIVE



- MEMBER GROWTH NET GOAL
- MEMBER GROWTH ACTUAL
- ▲- LAST YEAR MEMBERSHIP ACTUAL

<b>DROPPED CLUBS: 3</b>	167 CLUBS OF 368 ADDED 1 OR MORE NEW MEMBERS	<b>GENDER DISTRIBUTION</b>
<b>DROPPED MEMBERS</b>	<a href="#">CLICK HERE FOR CUMULATIVE MEMBERSHIP DATA</a>	MALE 6,774 (68.44%)
DECEASED 123		FEMALE 3,108 (31.40%)
CLUB CANCELLED 0		NON BINARY 0 (0.00%)
OTHER 561		PREFER NOT TO ANSWER 15 (0.15%)
<b>TOTAL 684</b>		<b>TOTAL FAMILY UNIT MEMBERS 2,062</b>
		<b>FAMILY MEMBERS PAYING HALF DUES 1,049</b>